

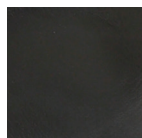
# Smart STEPS Options



## Materials & Colours

All our footwear is fully lined in pig skin leather as standard. We can also use calf leather, moleskin or sheepskin on request (additional charge).

### Waxy Leather



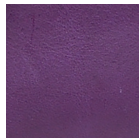
Black



Brown



Fuchsia



Purple



Navy

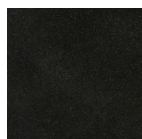


Tan



White

### Bulbuck (Suede)



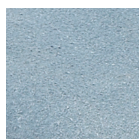
Black



Red



Turquoise



Ice

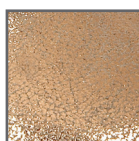


Gooseberry

### Glitter Leather



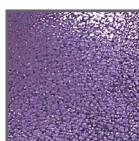
Graphite



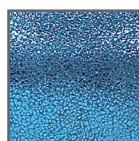
Apricot



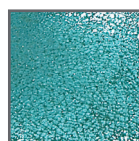
Fuchsia



Purple



Blue



Green



Silver

### Patent Leather

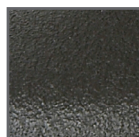


Black



Cherry

### Rubberised Leather



Black



Scuff-proof  
rubberised  
leather

This can be used to add scuff-proof areas such as toe boxes and heel counters and is stitched over the leather during manufacture.

## Sole Units

All stitchdown footwear will be supplied with a hard wearing rubber commando sole in either black or caramel. We also offer a lightweight EVA sole should weight of the footwear be paramount above wearability



Rubber Commando Sole



Lightweight EVA Sole

All our trainer styles have a cemented construction with either a Side Stitched sole or Trainer Sole depending on the style in either black or white. Both sole units have a rubber bottom which could be changed to lightweight EVA to reduce weight



Side Stitched Sole



Trainer Sole