

# COLOUR CHARTS



## LEATHER

Black	Dark Brown	Brown	Acorn	Taupe	Oatmeal	Alabaster
Navy	Skye	Violet	Lilac	Powder	Fuchsia	Cherry
Burgundy	Grey	Dove	White	Sunshine	Tangerine	Lime

## NUBUCK

Black	Dark Brown	Brown	Oatmeal	Taupe	Sage	Tan
Navy	Skye	Powder	Ice	Violet	Fuchsia	Cherry
Burgundy	Grey	Alabaster				

## OILY NUBUCK

Ebony	Mocha	Cayenne

## PEARLISED LEATHER

Oatmeal	Alabaster	Dove	Navy	Burgundy

## NEOPRENE



Black



Brown



Taupe



Alabaster



Grey



Burgundy



Navy

## SAVOY GRAIN



Black



Ebony



Acorn



Oxblood

## ATEAKA



Black



Brown



Navy

### NEW

Ateaka is our new lightweight and flexible synthetic leather option. It offers several benefits over regular leather including longer lasting wearability, less creasing and easier maintenance, while remaining waterproof and breathable.

## RHINO



Black



Taupe



Navy



Fuchsia

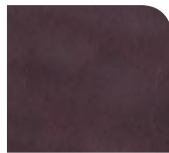


Ice

## ARTIFACT



Polo Tan



Cabernet



Irish Whiskey



Dark Rum

## PATENT



Black

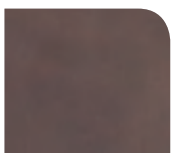


Purple



Wild Cherry

## OUTBACK



Ebony



Tan

## TRIM



Pink Reptile



Turquoise Reptile



Snake

### NEW - Heat Mouldable Material

**HEAT MOULDABLE  
UNLINED VAMP**



Our new heat mouldable neoprene allows you to apply heat using a low-temperature heat gun or a hairdryer, then mould to suit, for example to accommodate bunions or claw toes. Once cooled, the shape will remain until reheated.