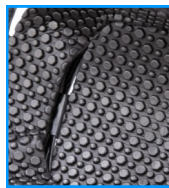


Matrix Pro Sport



Comfort Grip



Knee Sleeve



Neoprene Wrap

Indications

- ACL, MCL, LCL knee ligament instabilities
- Protection for the active patient
- Pro Sports suited to the more active patient or for greater stability requirements

Features

- Strong, lightweight frame constructed from high strength, compression moulded carbon composite
- "ICR" low profile hinge mimics the natural movement of the knee
- Full ROM control via a range of extension stops (included) and optional flexion stops (kit available separately)
- Flexible cuffs, adjustable straps and Condylar pads provide stability and customised fit
- Full coverage sliding patella system, removable as required e.g. for water sports
- Built-in knee guards and comfort grip padding prevents migration
- Mini screwdriver included for easy adjustments, plus trimmable "Y" straps, a thinner set of pads and shim kit option for complete customised fitting
- Optional Knee Sleeve for added comfort, Neoprene Wrap for further customised fitting and replacement strap kit also available

Measurements & Order Codes:

Size	Joint Width		Pro Sports		Knee Sleeve	Neoprene Wrap	Flexion Stop Kit	Strap Kit
	Inches	Cm	Left	Right				
Small	3.5 - 4	8.9 - 10	MKB-PS-L-S	MKB-PS-R-S	MKB-KS-S	MKB-NSW	MKB-FSK	MKB-STR
Medium	4 - 4.5	10 - 11.4	MKB-PS-L-M	MKB-PS-R-M	MKB-KS-M			
Large	4.5 - 5	11.4 - 12.7	MKB-PS-L-L	MKB-PS-R-L	MKB-KS-L			
X Large	5 - 5.5	12.7 - 14	MKB-PS-L-XL	MKB-PS-R-XL	MKB-KS-XL			



Chris Hanley & Partners

4 Kilvey Road, Brackmills, Northampton, NN4 7BQ

Tel: 01604 709999 Fax: 01604 700057

e-mail: info@chaneco.co.uk www.chaneco.co.uk

