

Boxia® Ankle Brace



Indications

- Drop Foot
- Peroneal Neuropathies
- Dysfunctional gait
- Contraindicated for spastic paralysis and circulatory and sensory disorders

Features

- 2 separate parts - a support above the ankle and a non-slip section which fits between the tongue and shoelaces of the patient's footwear
- Sections are linked by an elastic strap which can be adjusted depending on the level of support required
- Discreet and comfortable for increased patient compliance
- Localised gel padding for comfort
- Lightweight and easy to fit - measure ankle circ. just above malleoli for correct size
- Alternative shoeless wrap version available - measure foot circ. immediately behind ball of foot for correct size
- Replacement traction elastic and shoe inserts available separately

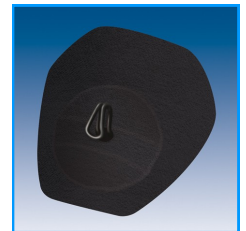
Shoeless Wrap



Replacement Traction Elastic



Replacement Shoe Inserts (Pack of 2)



Measurements & Order Codes:

Size	Ankle Circ (just above malleoli)	Foot Circ (immediately behind ball of foot)	Ankle Brace	Shoeless Wrap - Left	Shoeless Wrap - Right	Traction Elastic	Shoe Inserts (2 pack)
X-Small	13 - 17cm	N/A	ABB-XS	N/A	N/A	N/A	ABB-SI
Small	17 - 21cm	17 - 21cm (6¾ - 8¼")	ABB-S	ABB-SW-S-L	ABB-SW-S-R	ABB-E-S	
Medium	21 - 25cm	21 - 25cm (8¼ - 10")	ABB-M	ABB-SW-M-L	ABB-SW-M-R	ABB-E-M	
Large	25 - 29cm	25 - 29cm (10" - 11½)	ABB-L	ABB-SW-L-L	ABB-SW-L-R	ABB-E-L	



Chris Hanley & Partners

4 Kilvey Road, Brackmills, Northampton, NN4 7BQ

Tel: 01604 709999 Fax: 01604 700057

e-mail: info@chaneco.co.uk www.chaneco.co.uk

